

ReGIS

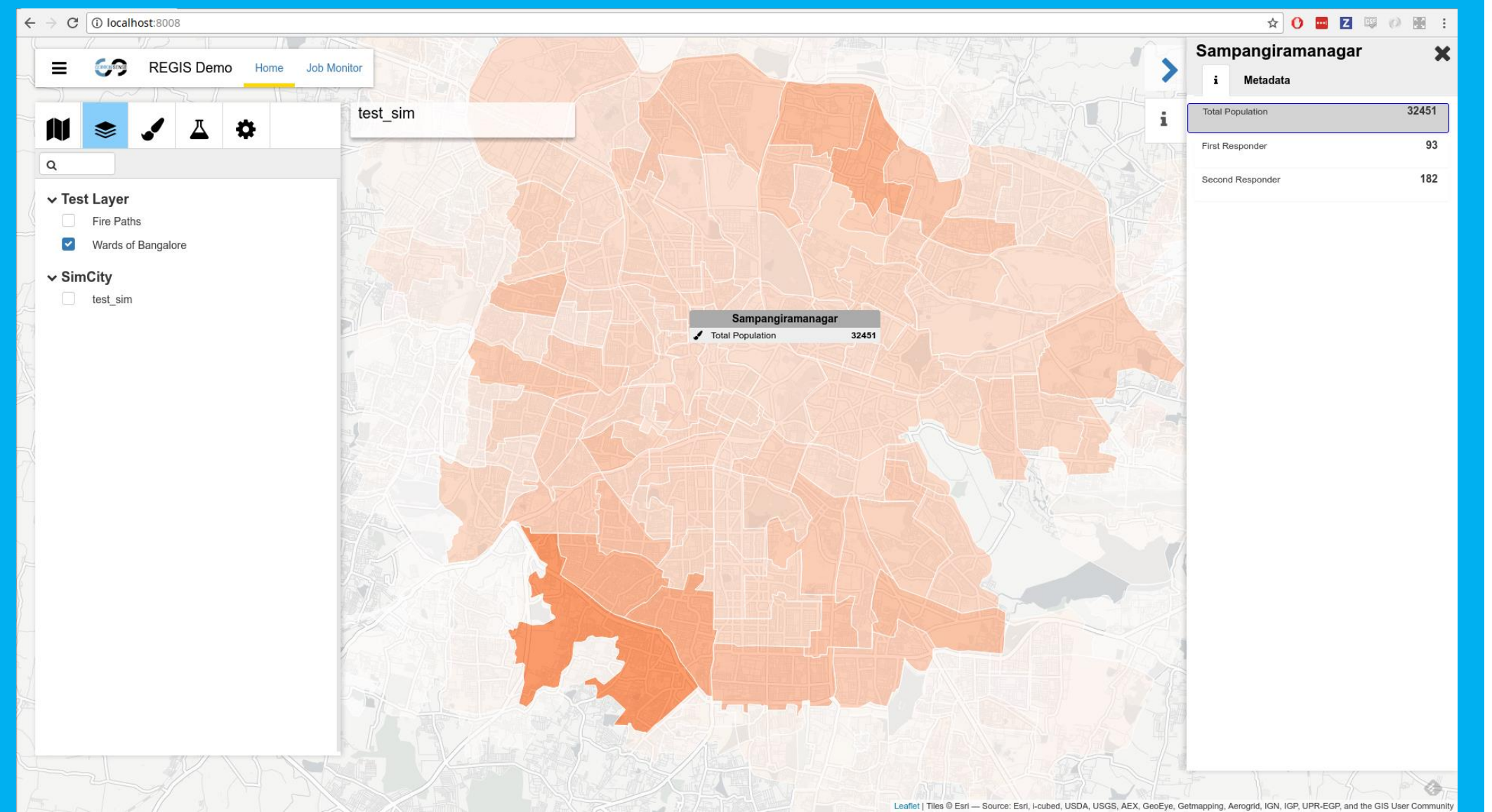
Visualization and Simulation of GIS data made easy

Berend Weel, Carlos Martinez, Joris Borgdorff, Mike Lees

1. Visualize

Display your GIS data on the map. Describe your data to display its features in the call-out. Supported data formats include GeoJSON, TopoJSON and WMS Sources.

Features can be used to filter data and style the elements on the map

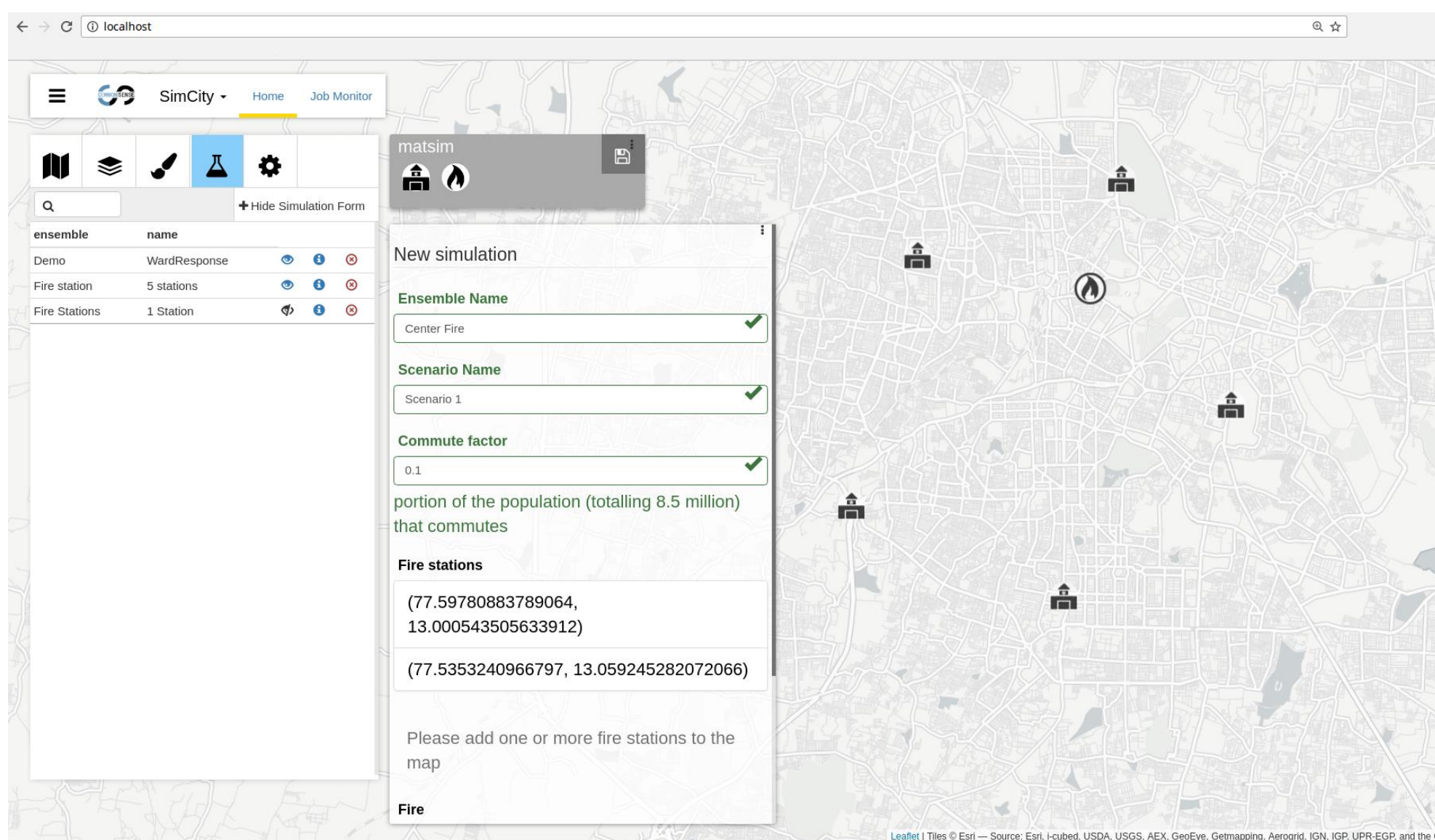


2. Run Simulations / Models

Define the parameters of your model including geospatial input (i.e. points on the map).

These points can be specified by dragging and dropping them on the map.

Submitting the simulation form will run the simulation on the compute infrastructure you configured. This can be anywhere: from your local laptop to a super-computer!

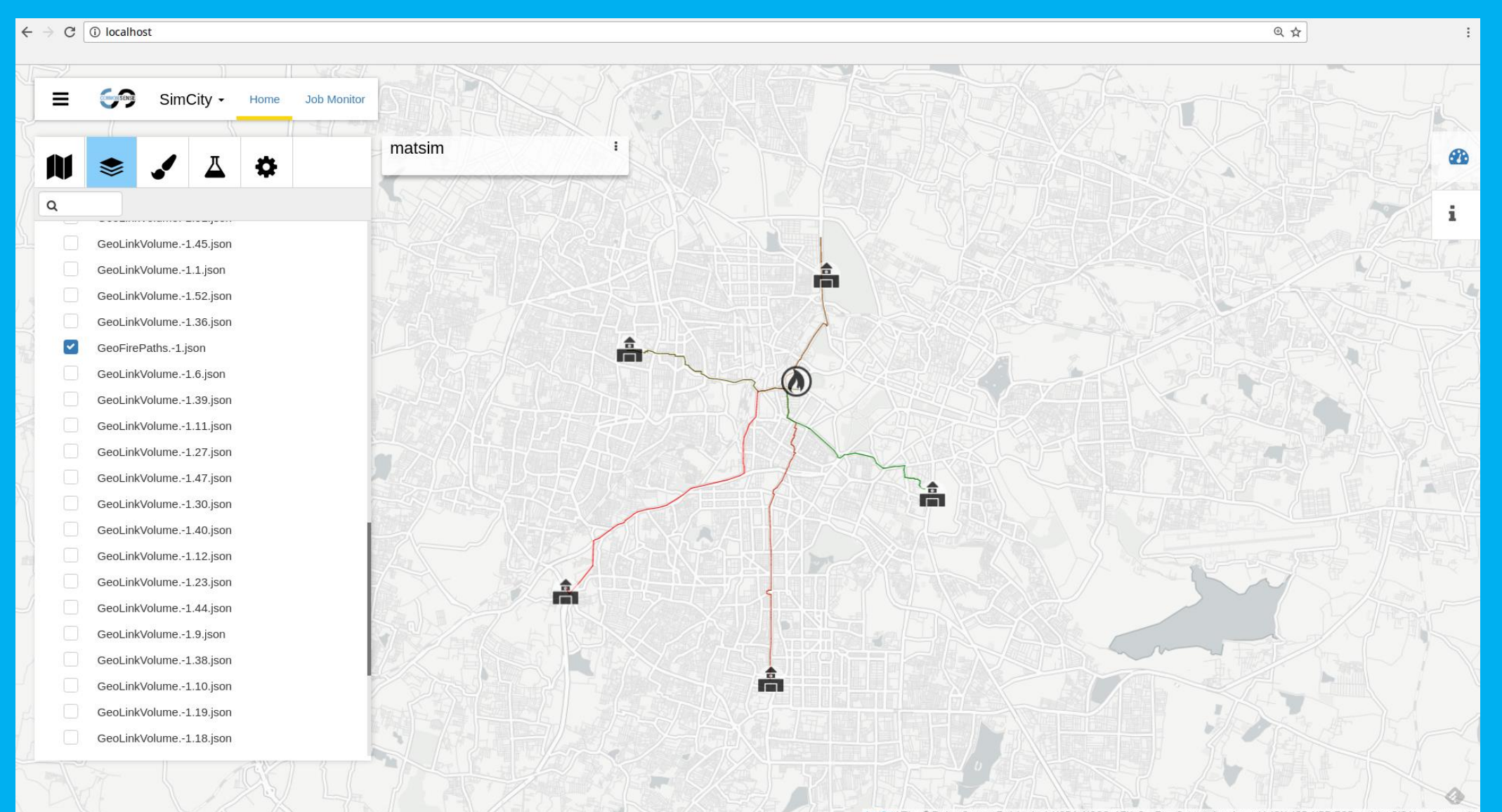


3. Analyze Results

Any GIS results from your simulation can then be displayed on the map again.

Used in several eScience Projects:

- Dynaslum - Decision Support
- GLAM - Visualization of Library Data
- GeoViz - Visualization of GeoSpatial Data



Try it yourself:

<http://www.github.com/ReGIS-org/ReGIS-stack.git>

<http://regis.readthedocs.io>

In collaboration with:



UNIVERSITY OF AMSTERDAM



www.eScienceCenter.nl



[Twitter.com/eScienceCenter](https://twitter.com/eScienceCenter)